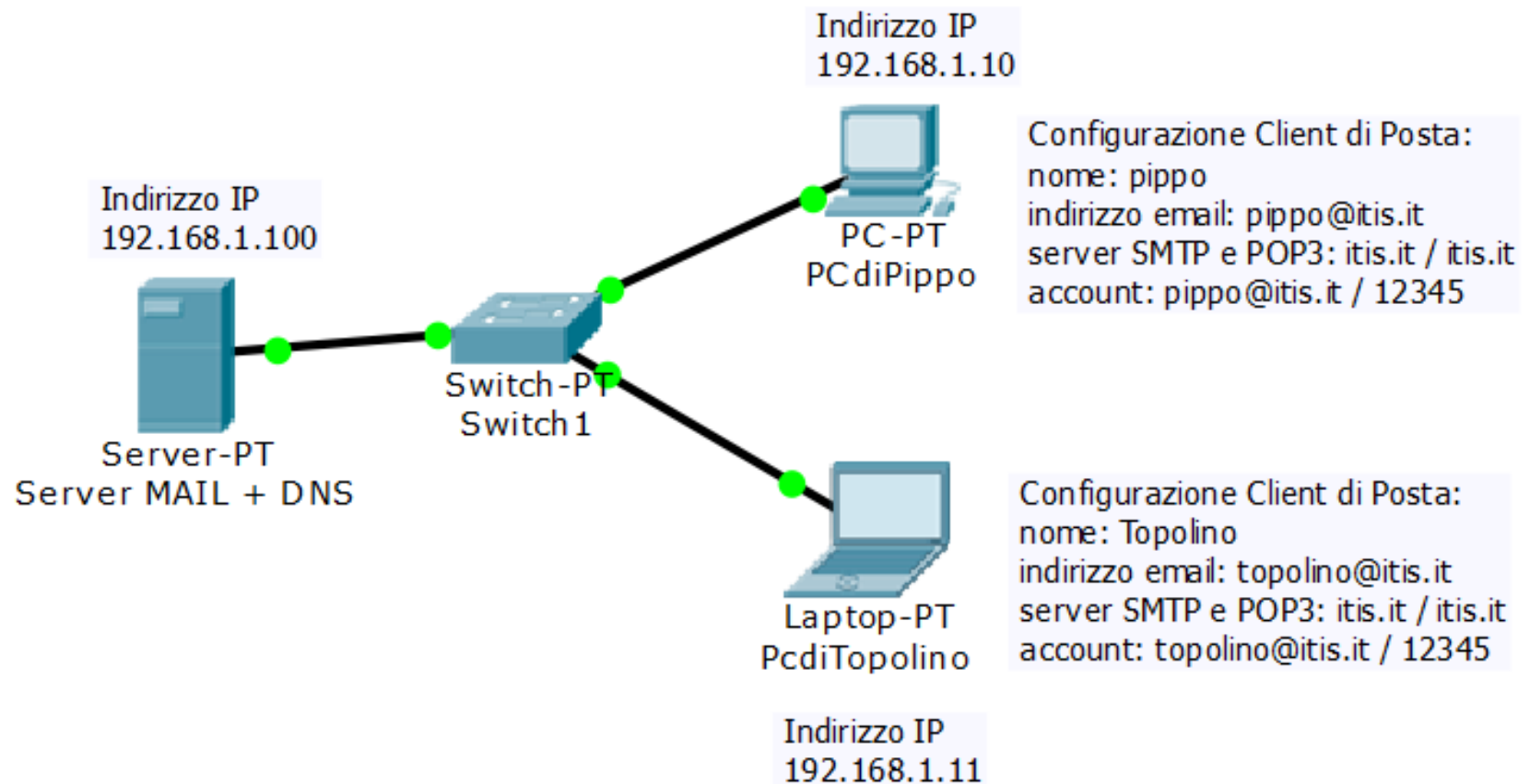


ESERCIZIO: configurare su una LAN un server MAIL+DNS che gestisca il dominio di posta "itis.it" con gli account "pippo@itis.it" e "topolino@itis.it". Configurare due PC con i relativi Client di Posta per inviare/scaricare la posta dai due account.

Server DNS - domini registrati:
"itis.it" = 192.168.1.100
(in pratica, se stesso!)

Server MAIL:
dominio "itis.it"
account "pippo@itis.it"
account "topolino@itis.it"



Configurazione del SERVER di POSTA ELETTRONICA (e SERVER DNS)

SERVICES

- HTTP
- DHCP
- DHCPv6
- TFTP
- DNS
- SYSLOG
- AAA
- NTP
- EMAIL**
- FTP

EMAIL

SMTP Service ON OFF

POP3 Service ON OFF

Domain Name:

User Setup

User Password

SERVICES

- HTTP
- DHCP
- DHCPv6
- TFTP
- DNS**
- SYSLOG
- AAA
- NTP
- EMAIL
- FTP

DNS

DNS Service On Off

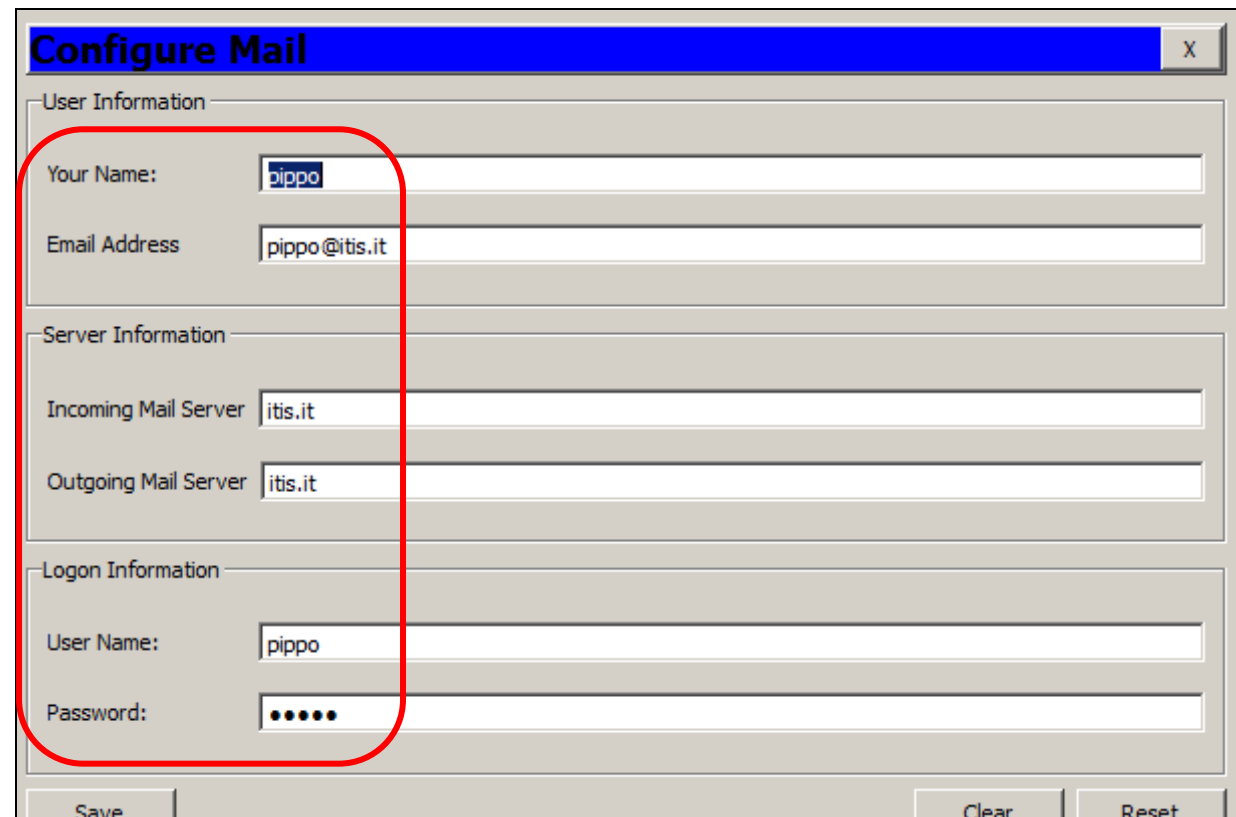
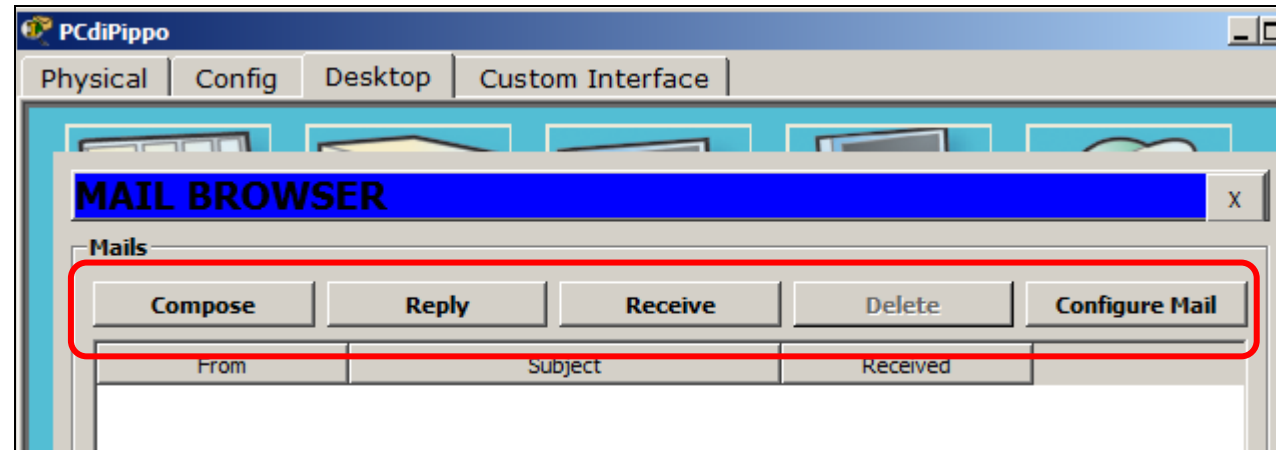
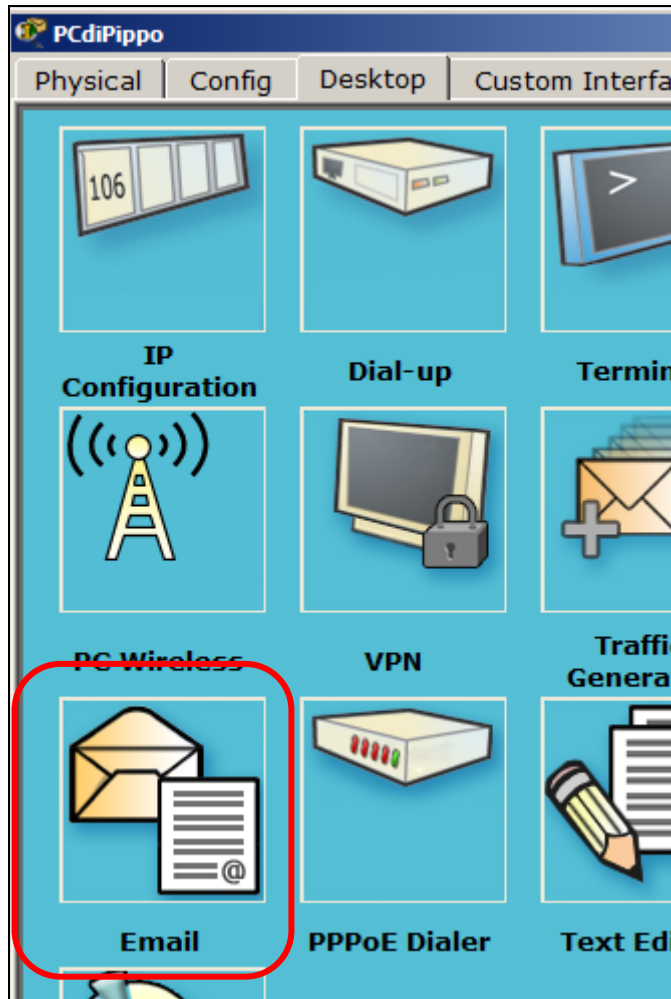
Resource Records

Name Type

Address

No.	Name	Type	Detail
0	itis.it	A Record	192.168.1.100

Configurazione del CLIENT di POSTA ELETTRONICA (su PcDiPippo e PcDiTopolino)



Invio di un messaggio dal PcDiPippo a topolino@itis.it - Ricezione del messaggio sul PcDiTopolino

Compose Mail

To:

Subject:

Ciao Topolino ... sono Pippo!
A presto...

Sending mail to topolino@itis.it , with subject : Saluti .. Mail Server: itis.it
DNS resolving. Resolving name: itis.it by querying to DNS Server: 255.255.255.255 DNS resolved ip address: 192.168.1.100
Send Success.

PcdiTopolino

Physical | Config | Desktop | Custom Interface

MAIL BROWSER

Mails

	From	Subject	Received
1	pippo@itis.it	Saluti	dom mag 7 2017 11:14:21

Receiving mail from POP3 Server itis.it
DNS resolving. Resolving name: itis.it by querying to DNS Server: 255.255.255.255 DNS resolved ip address: 192.168.1.100
Receive Mail Success.